

# TREE CANOPY *at* WHITE STADIUM

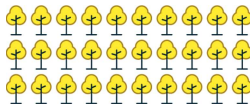
*Learn more about the tree planting and protection strategy for the Rehabilitation of White Stadium.*

**TREES  
REMOVED**

All trees proposed for removal as part of the Rehabilitation of White Stadium have been marked with removal signs.

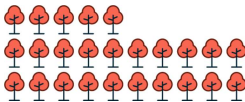
40

GROWING  
INTO FENCES  
AND WALLS



35

POOR CONDITION  
AND/OR DEAD,  
DYING, DISEASED



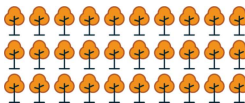
11

FAIR HEALTH



40

INVASIVE OR  
NON-NATIVE  
SPECIES



19

GOOD HEALTH

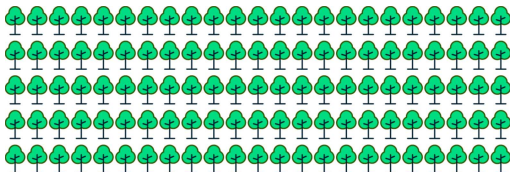


**120  
TREES  
PRESERVED**

Prioritize Legacy & Heritage Trees

Improve Tree Health

(Within White Stadium Rehabilitation area)



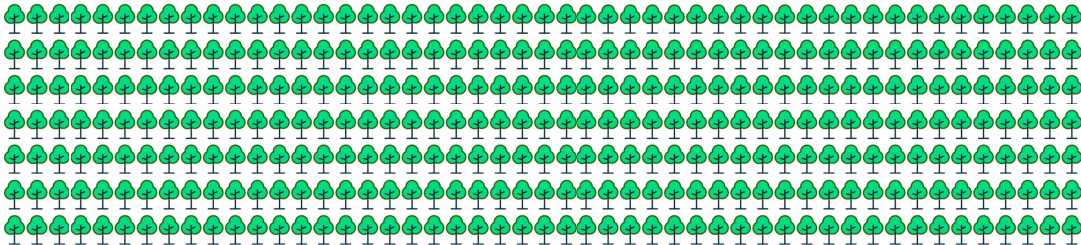
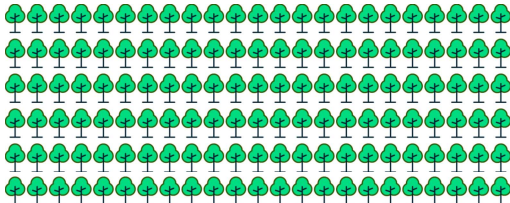
500+

**TREES  
PLANTED**

Achieved through New Site Plantings & the Creation of the Franklin Park Tree Bank

Improve Species Composition

Follow Olmsted's Intent



**JOIN US AT THE PUBLIC TREE MEETING:** OCTOBER XX, 2024 AT X PM  
TO FIND OUT MORE, PLEASE SCAN HERE OR VISIT [BOSTON.GOV/WHITE-STADIUM](https://boston.gov/white-stadium)